

FOLDING CARD INFORMATION

D&T: GRAPHIC PRODUCTS

FOLDS HAVE NAMES TOO!

When card or paper is folded it becomes a product. The style of the product has a name.

There are a huge range of fold in general use but the limited range here will be quite enough for GCSE.

D&T: CYNHYRCHION GRAFFIG

NOT ALL FOLD ARE EQUAL!

When card or paper is scored and folded more than once an allowance needs to be made to take account of the thickness of:

- the card,

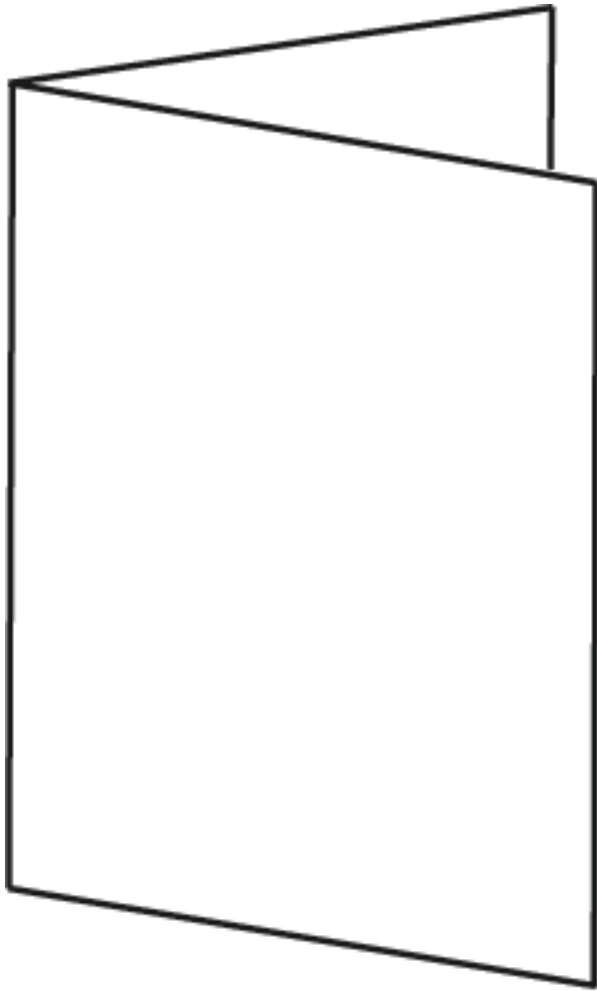
- the width of the scoring,

- the thickness that has to be contained.

D&T: GRAPHIC PRODUCTS

**SEVEN FOLDS
FOR YOU
TO USE.**

D&T: CYNHYRCHION GRAFFIG

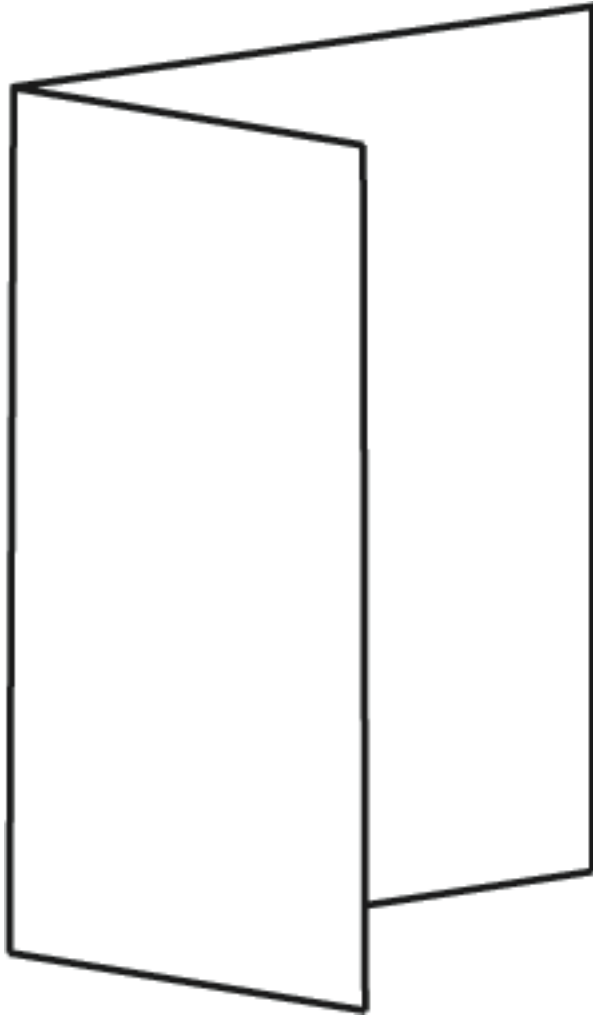


SIMPLE FOLD

One fold made along or against (across) the grain.

Both parts are the same size.

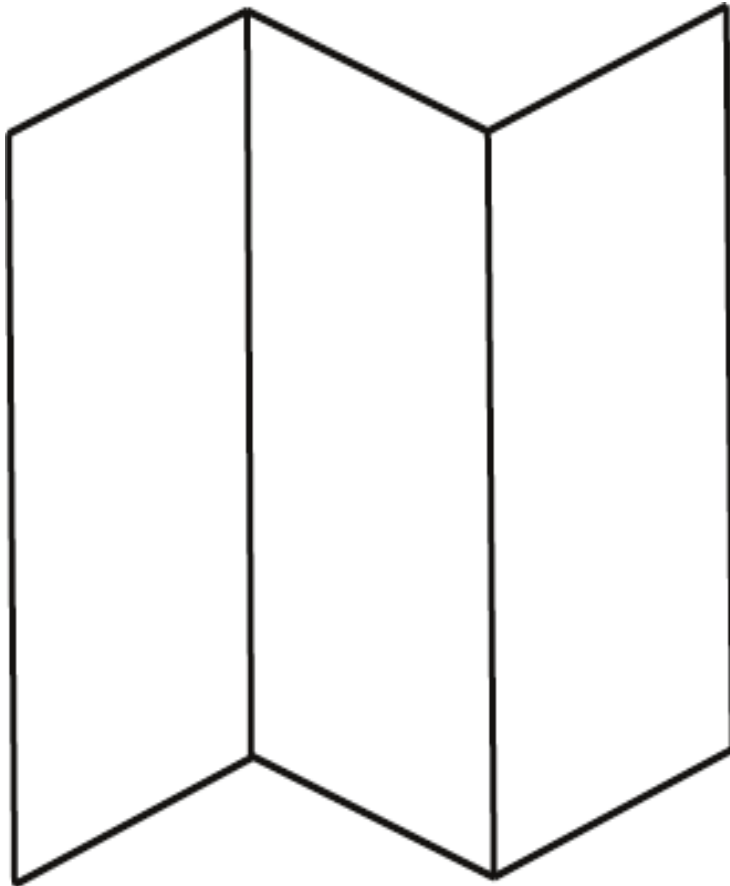
D&T: GRAPHIC PRODUCTS



SHORT FOLD

One fold made along or against (across) the grain.

One side is longer than the other side.



ACCORDION FOLD

A multiple fold where the first fold bends in and the next bends out. Best made with the grain.

The outer panels need to be larger than the centre panel.

D&T: GRAPHIC PRODUCTS

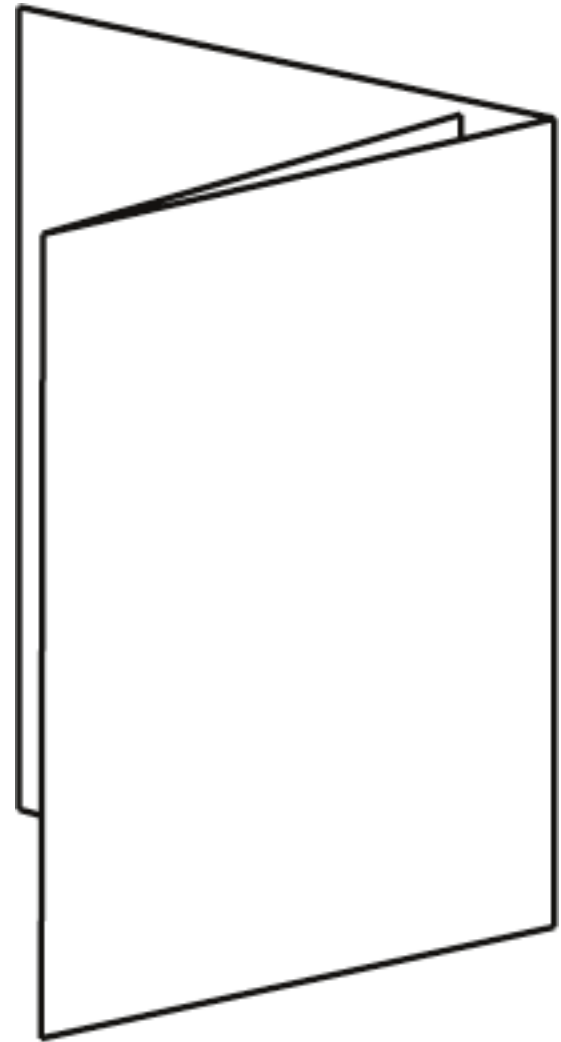
BARREL FOLD

Two folds in which the outer edges of the page are folded towards each other.

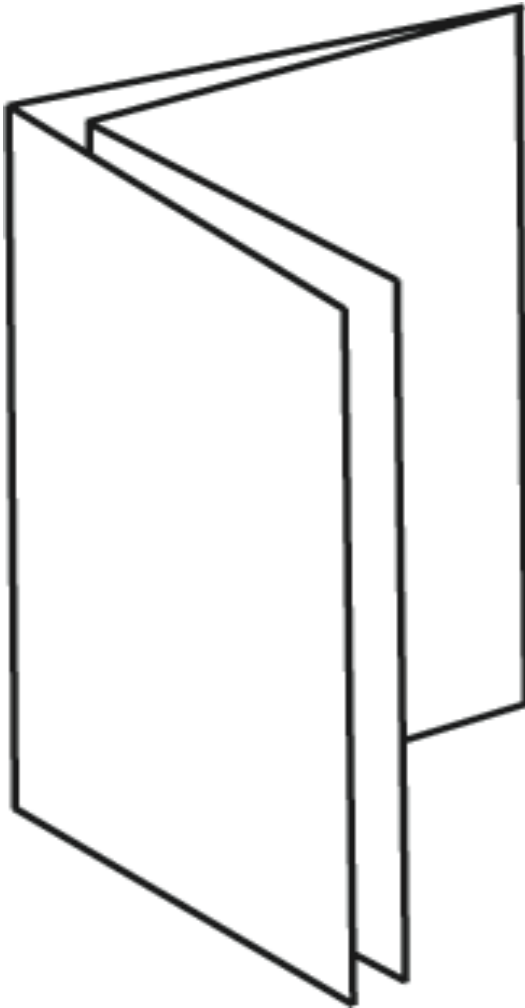
The edges can meet in the middle or overlap each other (as shown).

Can work with or against the grain.

The panels are all different sizes. The centre panel the standard size, the first fold is smaller and the second fold is larger.



D&T: CYNHYRCHION GRAFFIG



PARALLEL FOLD

A combination fold that contains a BARREL fold with an ACCORDION fold.

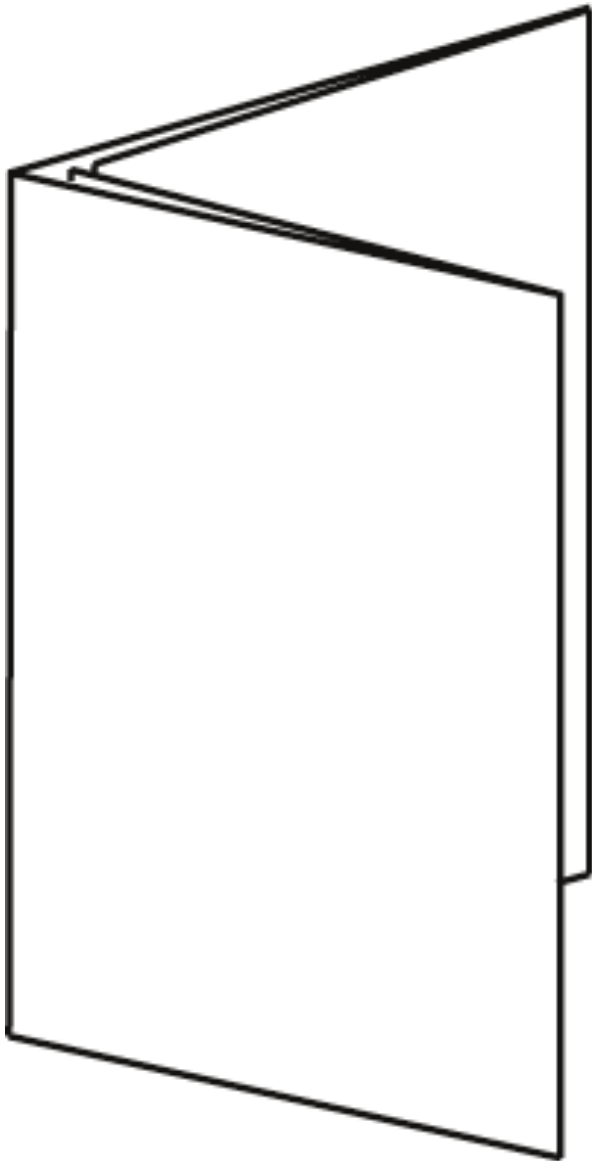
Can work with or against the grain.

Both parts are the same size.

The panels will be different sizes with the third and fourth folds being smaller than the first two folds.

D&T: GRAPHIC PRODUCTS

GATE FOLD



A type of BARREL fold that has an additional fold in the centre of the paper. Depending on where the folds are the gates can be the same size or different sizes.

Can work with or against the grain.

The panels are different sizes. The outer panels are the standard size and the gates will be smaller.

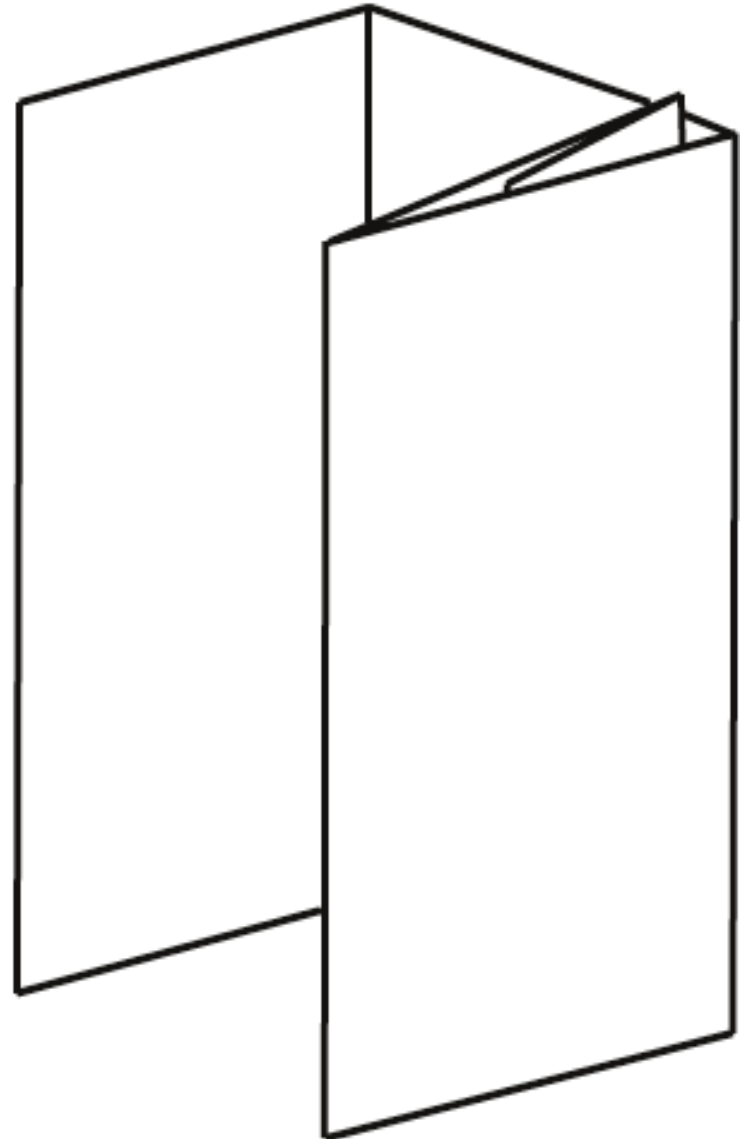
D&T: CYNHYRCHION GRAFFIG

COMPLEX BARREL FOLD

A type of BARREL fold that has more than two folds. The example has four folds.

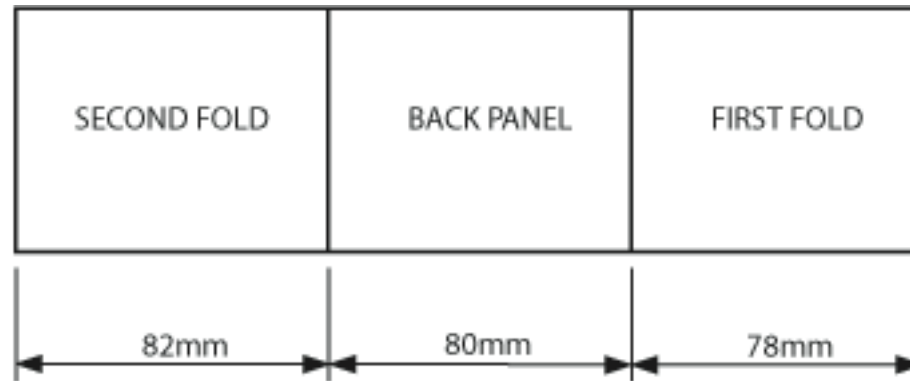
Can work with or against the grain.

The panels are different sizes. The back panel is the standard size and the left panel will be larger and the right panels will each be smaller than the one before it.



D&T: GRAPHIC PRODUCTS

SIZING A BARREL FOLD



The first fold goes inside and needs to be smaller than the back. Start with a reduction of 2mm.

The second fold is the cover and needs to be bigger than the back. Start with an enlargement of 2mm.

Prototyping will allow for fine tuning the sizes and is DEVELOPMENT.

D&T: CYNHYRCHION GRAFFIG

Don't forget to

SCORE not *CUT*

the card before each fold.

Use a bone folder and a scoring board

or

a scoring tool on a CAMM 1.